

ELEV
158

OCH
A550
B650

Discrete Procedure
Not for Operational Use

WELLESBOURNE
(Cat A & B)VOR/DME 36

WELLESBOURNE
Radio
124.025

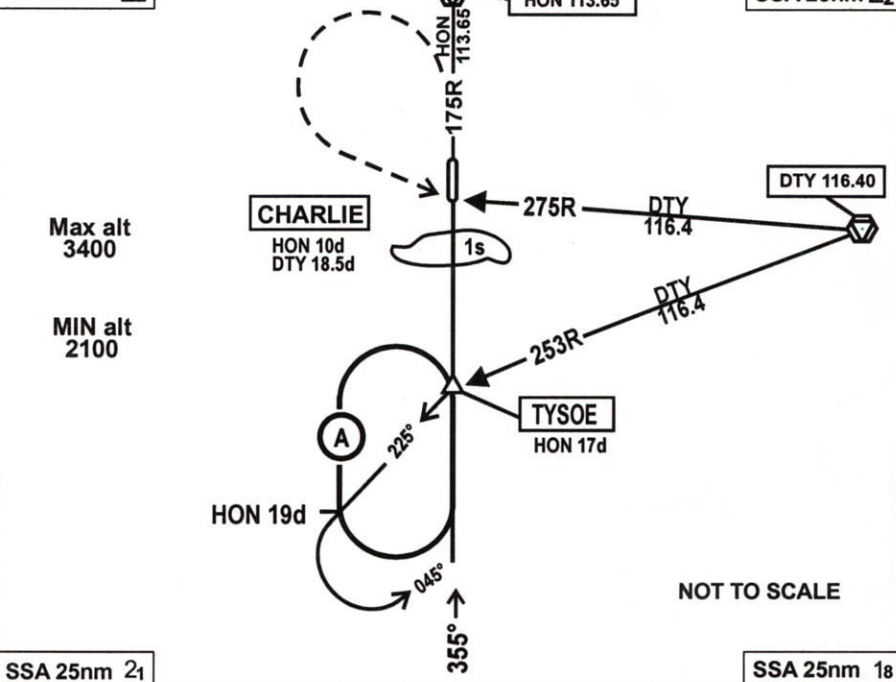
BIRMINGHAM
Radar
118.050

BIRMINGHAM
Atis
126.275

N1 1N
01 JUN 1995

SSA 25nm 2₂

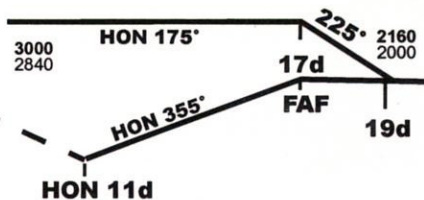
SSA 25nm 2₂



HON

Ahead to 1160 1000
or HON 9d then left
to intercept DTY 22d
or 2160 2000 then left
to intercept DTY 275
to CHARLIE

MAP at HON 11d



Var
5W

A/D Elev 158/6mb

T.Lev ATC
T.Alt 3000

Procedure not available without DME

HON DME

17d	2160	2000
16d	1940	1780
15d	1630	1470
14d	1340	1180
13d	1040	880

1. Alternate procedure:
Descend outbound in hold
to 2160 2000 then left on to
HON 355 Descend at FAF.
2. DME heights correspond to
a 3 degree glideslope.
3. Uncontrolled traffic